



# VILNIUS TECH

Vilnius Gediminas  
Technical University

## ENTRANCE TEST FOR ARCHITECTURE STUDY PROGRAMME (Integrated studies in English, 5 years. Master's degree in Arts)

### DURATION:

4 Hours for two tasks

### ALLOWED TOOLS:

One sheet of A3 paper per task, graphite pencil, eraser, sharpener  
(no rulers or additional tools are allowed)

### TASKS:

#### 1. Architectural Composition

The aim of this task is to propose a design for a **small-scale architectural object within a specific environment**.

Candidates are expected to present the following on a single A3 sheet: a **building plan, front and side elevations, a perspective view from eye level within specific environment**; additional views (optional).

The test must be completed on one A3 sheet using a freehand technique with a graphite pencil.

**What is a small-scale architectural object?** Typically it is a structure of less than 100 sq. m., but this may vary depending on the author's concept.

**What kind of object will I have to design?** The specific task varies each year. Examples of typologies that fit within this scale include: a small house with a specific function, a shed, a café within a particular environment.

#### 2. Freehand Academic drawing

The aim of this task is to create a freehand drawing of a given construction, accurately depicting its form and proportions.

Candidates are expected to present a construction composed of several elements arranged in specific order and proportion, as described in the task.

The test must be completed on one A3 sheet using a freehand technique with a graphite pencil.

**What kind of construction will I have to draw?** Basic three-dimensional shapes such as: cube, rectangular parallelepiped, sphere, cone. The task usually requires drawing these shapes in particular positions and varying sizes. Additionally, the subject may be a concrete object, such as a chair, table, or another simple real-life object.



# VILNIUS TECH

Vilnius Gediminas  
Technical University

## ENTRANCE TEST FOR ARCHITECTURE STUDY PROGRAMME (Integrated studies in English, 5 years. Master's degree in Arts)

### EXPLAINED

#### Architectural Composition

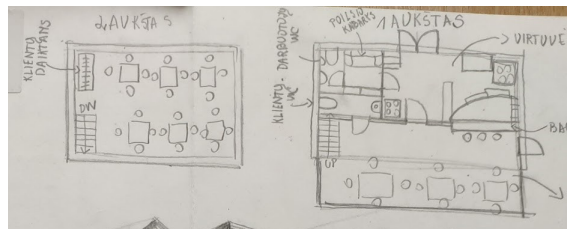
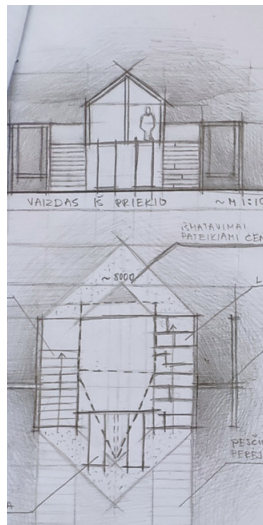
What is expected?

I understand what an architectural plan, façade, and section are and how they are represented.

I have a basic understanding of the logic behind walls, roofs, stairs, windows, and doors, as well as how a building is anchored to the ground.

I am familiar with architectural typologies and understand human needs in relation to specific functions.

For example, a café requires not only a spacious area for guests but also a kitchen, toilets, and other necessary facilities.



Sketches by students are provided solely to illustrate the task. They do not indicate the exact nature of the task or how it must be executed.



# VILNIUS TECH

Vilnius Gediminas  
Technical University

## ENTRANCE TEST FOR ARCHITECTURE STUDY PROGRAMME (Integrated studies in English, 5 years. Master's degree in Arts)

### EXPLAINED

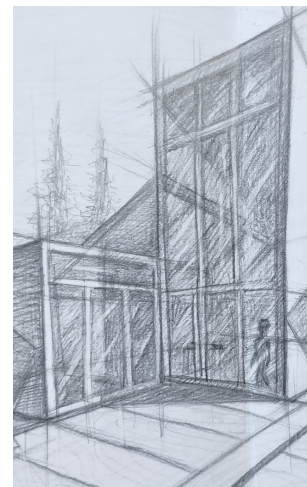
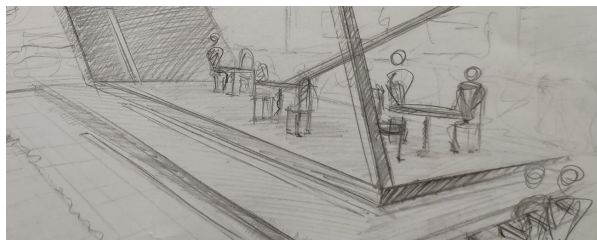
#### Architectural Composition

What is expected?

I understand the basics of ergonomics and have a sense of scale.  
For example, I know the appropriate size of a table for people, how much space is needed around it, and how door dimensions relate to the human body.

I am both creative and logical. I can develop an architectural concept that meets human needs, is logically structured, fits within its context, and has a strong conceptual foundation.

I can express my ideas through freehand drawing using only a pencil, depicting perspective views from eye level while considering light, shadows, and the specific context.



Sketches by students are provided solely to illustrate the task. They do not indicate the exact nature of the task or how it must be executed.



# VILNIUS TECH

Vilnius Gediminas  
Technical University

## ENTRANCE TEST FOR ARCHITECTURE STUDY PROGRAMME (Integrated studies in English, 5 years. Master's degree in Arts)

### EXPLAINED

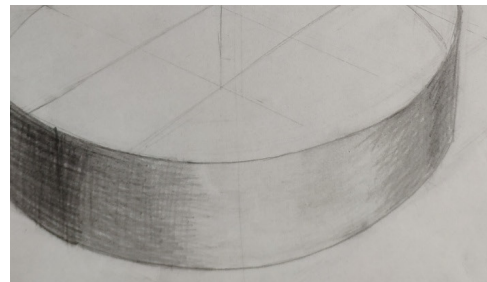
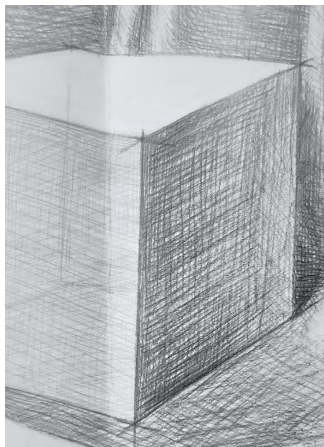
#### Freehand Academic drawing

What is expected?

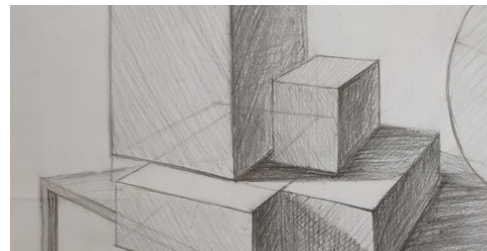
I am familiar with basic three-dimensional shapes and can draw them, including cubes, rectangular parallelepipeds, spheres, and cones.

I understand perspective and can depict objects from different angles.

I have a strong sense of proportion and can draw objects in varying sizes while maintaining correct relationships between them.



Sketches by students are provided solely to illustrate the task. They do not indicate the exact nature of the task or how it must be executed.





# VILNIUS TECH

Vilnius Gediminas  
Technical University

## ENTRANCE TEST FOR ARCHITECTURE STUDY PROGRAMME (Integrated studies in English, 5 years. Master's degree in Arts)

### EXPLAINED

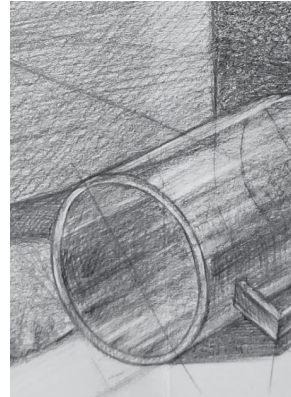
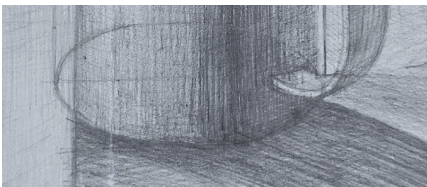
#### Freehand Academic drawing

What is expected?

In addition to basic geometric forms, I can also sketch simple objects such as chairs and tables.

I am aware of different materials and consider light and shadows in my drawings.

I have a basic knowledge of art and architectural theory and am comfortable with terms such as column and pedestal.



Sketches by students are provided solely to illustrate the task.

They do not indicate the exact nature of the task or how it must be executed.